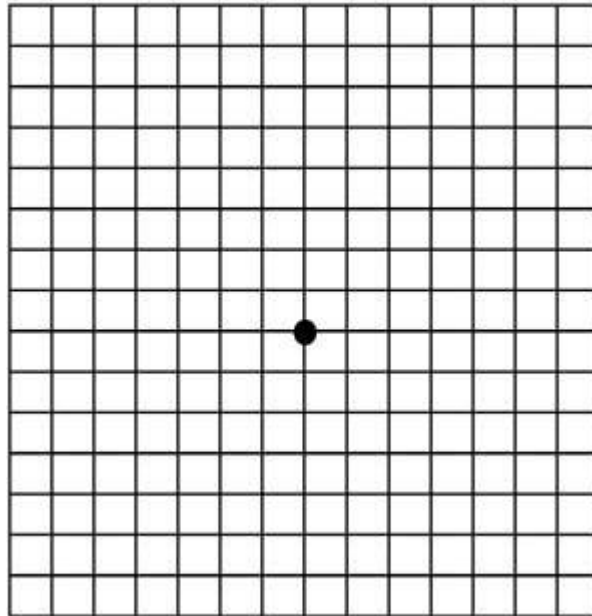


Amsler Grid Test



Instructions for Amsler Grid Testing

1. Wear your reading glasses
2. Hold the Amsler grid at normal reading distance
3. Cover one eye
4. Look at the dot in the center of the grid
5. While looking at the dot, note how the lines and squares appear
6. Test the other eye in the same manner

Results and What to Do

- All of the lines should appear straight and the squares should appear uniform in size
- If you note any changes in the appearance of the grid, such as distortion, blurring, discoloration, dark or missing areas of the grid, or any changes, call and see your eye doctor immediately. Do not wait to see if the changes will clear on their own. Timely treatment is vital to safeguarding your vision.